

BATcam



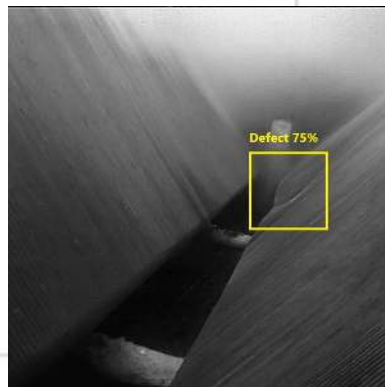
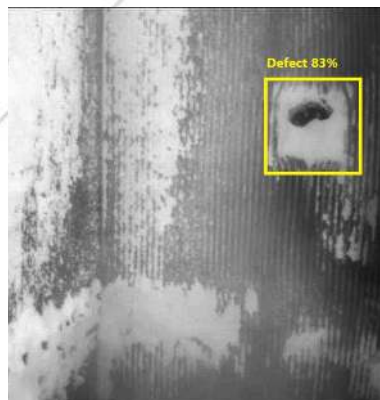
Extreme Temperature Precision Imaging System







Capturing Images of the interior of furnaces, kilns and boilers requires a highly specialized combination of optics and cameras due to the unique and harsh processes. Utilizing standard visible light wavelength cameras is an ineffective approach of capturing usable images/video. Instead, a camera capable of detecting radiant energy is utilized.

Infrared energy (IR light), emanating from heat, proves ideal as it remains unaffected by smoke, steam, or fog, providing optimal visibility into the furnaces or boiler's interior.

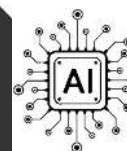
The BATcam line of Imaging systems utilizes IR light and proprietary optics to deliver intricate live images of furnace interiors, focusing particularly on thru-flame imaging.



-  High Precision optics
-  Hardened electronics
-  Multiple comm formats
-  Factory Calibrated



Deep Learning Capabilities



www.eandetech.com

LEADERS OF INDUSTRY 4.0

BATcam



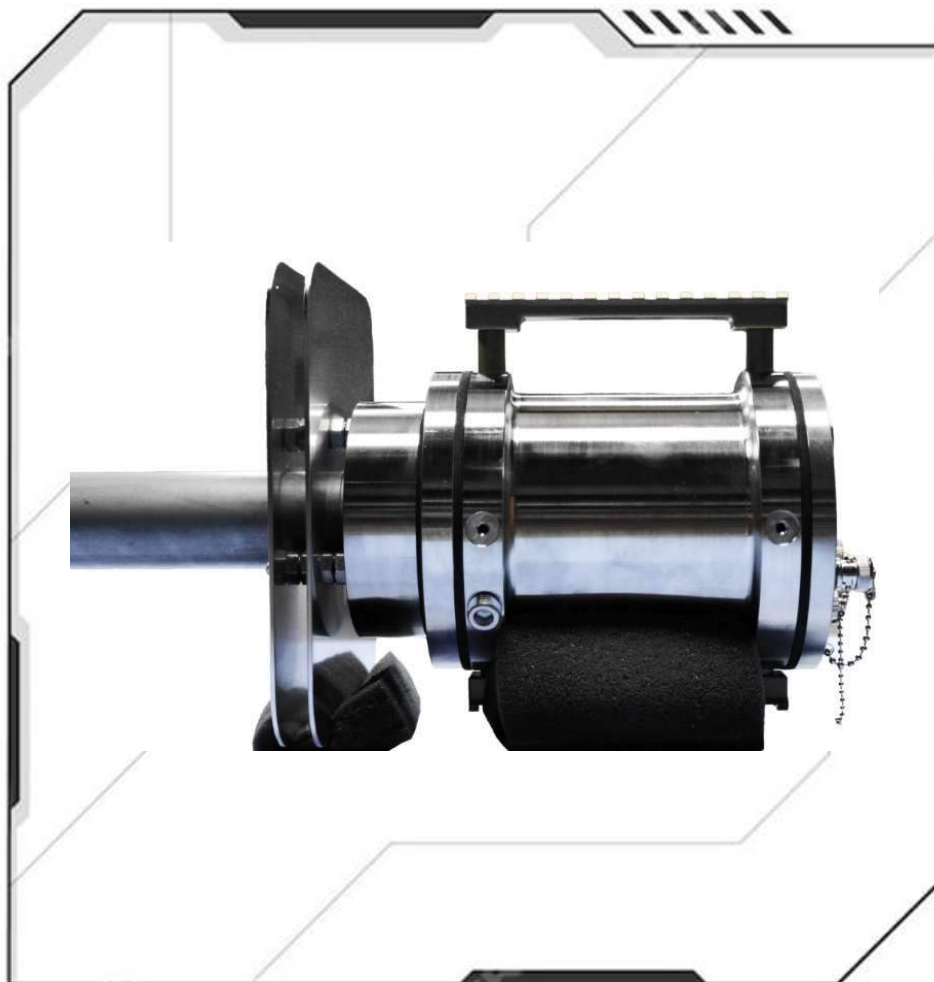
Specifications

| Camera | Specification |
|----------------------|---|
| Format | 17 μ m Pitch, 840 x 480 |
| Spectral Response | MWIR |
| Frame Rate | 30 fps |
| Video Output | NTSC/Pal, Optional Gigabit Ethernet |
| Borescope | Specification |
| Length | 2' (63cm), 4' (1.2m), 6' (1.8m), Custom Lengths Avail |
| Diameter | 1.65" (42mm) |
| Field of View (DFOV) | 55°, 75° or 110°. |
| Cooling | Compressed air, 1/2" NPT input. 1-45 Scfm |
| System | Specification |
| Temperature Imaged | 100 to +1800° C |
| Enclosure | 316 Stainless Steel |

BATcam



-  Made in USA
-  Athermalized Optics
-  Engineered Cooling Design
-  316 Stainless Steel Construction
-  Solid State Reliability
-  Fixed or Mobile Flexibility

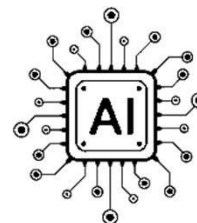


Email info@eandtech.com

Phone [\(678\) 404-8380](tel:(678)404-8380)

Address [400 Perimeter Center](#)
[Terrace NESuite](#)
[105Atlanta, GA 30346](#)

Optional AI Capabilities



www.eandtech.com

LEADERS OF INDUSTRY 4.0